



**Eastern States Archeological Federation
Annual Meeting
November 2-4, 2017
Co-hosted by the Archaeological Society of
Connecticut and the Massachusetts Archaeological
Society**

**Holiday Inn
35 Governor Winthrop Boulevard
New London, CT 06320**

**President: Dean Knight
President-Elect: John Nass
Past President: Kurt Carr
Treasurer: Tim Abel
Corresponding Secretary: Martha Potter Otto
Recording Secretary: Richard A. Doyle
Business Manager: Roger Moeller
Archaeology of Eastern North America Editor: Arthur Spiess
Bulletin Editor: Zachary Singer
Webmaster: Roger Moeller**

ESAF Member Societies:

**Archaeological Society of Connecticut
Archaeological Society of New Jersey
Maryland Archaeological Society
Massachusetts Archaeological Society
New York State Archaeological Assn.
Ohio Archaeological Council
Vermont Archaeological Society**

**Archaeological Society of Delaware
Archaeological Society of Virginia
Maine Archaeological Society
New Hampshire Archaeological Society
New York Archaeological Council
Society for Pennsylvania Archaeology
West Virginia Archaeological Society**

Welcome to New London

Nick Bellantoni

ASC President

On behalf of both the Archaeological Society of Connecticut and our sister organization, the Massachusetts Archaeological Society, we extend our heartiest welcome to this year's Annual Meeting of the Eastern States Archaeological Federation. Connecticut has not hosted an ESAF meeting in a couple of decades, so we are honored and thrilled to have you back to the "Constitution State." Much has transpired in southern New England archaeology since then and we are pleased to showcase these developments at this ESAF meeting.

We encourage you to take advantage of the tour of the Mashantucket Pequot Museum and Research Center and one of our most significant archaeological sites adjacent to the museum, a 17th-century fortification. The Mashantucket Pequot Museum is a world-class educational facility and the personal tour of the state-of-the-art Research Center is not to be missed. This is a great opportunity for ESAF members and we hope you will be fortunate enough to be a part of it.

Along with papers ranging from Huronia to Virginia, we are especially proud of the sessions devoted to southern New England archaeology. ESAF members attending from the mid-Atlantic, New York and Canada will be introduced to a number of our up-and-coming students and professionals who are advancing our science in unique ways and the avocational community that has contributed so much to the archaeology of our region.

Our banquet speaker this year is Dr. Kevin McBride, Research Director at the Mashantucket Pequot Museum and Research Center and Associate Professor, Department of Anthropology, University of Connecticut. In company with enjoying a wonderful meal and the camaraderie of your colleagues on Saturday evening, Kevin's discussion of his research into 17th-century battlefields of the Pequot War promises to be a highlight of the weekend.

We extend a tip of the hat to all the presenters, session and meeting organizers. Acknowledging that it takes a lot of hard work from a host of people to put a meeting like this together, the mentioning of individual names will leave out a lot of people deserving recognition, but that said, we want to especially thank Ernie Wiegand, Al Smith, Curtiss Hoffman, and Roger Moeller for their time and expertise. This meeting doesn't happen without them.

So, we hope you will find ESAF's annual meeting this year will be informative and productive and we are delighted to welcome you back to Connecticut!

Welcome from Massachusetts

Alan Smith and Curtiss Hoffman

The Massachusetts Archaeological Society welcomes you to the 84th Annual Meeting of the Eastern States Archaeological Federation. As co-hosts of this meeting, we are pleased once again to sponsor the organization's annual gathering. We last hosted the ESAF meeting ten years ago in the Fitchburg/Leominster area of northern Massachusetts. We welcome you to New England once again to enjoy the beautiful Fall foliage season.

When our Society agreed to host this meeting, we immediately thought of bringing tours to the Mashantucket Pequot Museum. As a result, we reached out to our sister society, the Archaeological Society of Connecticut, to see if they would be willing to co-host the meeting with us. The planning of the meeting has been a cooperative effort between the two societies from the start.

Please take advantage of the opportunity to stay longer in the New London area, so that you can visit some of the attractions this part of New England has to offer. Our host hotel, the New London Holiday Inn, will be happy to extend your stay at the special conference rate for Sunday night. We especially recommend the historic Mystic Seaport and the Mystic Aquarium, both of which are very close to the hotel. The Mystic Seaport is the largest maritime museum in the United States. It is notable for its collection of sailing ships and boats and for the re-creation of the crafts and fabric of an entire 19th-century seafaring village. The Mystic Aquarium is one of three U.S. facilities holding Steller sea lions, and it has the only beluga whales in New England. Special exhibits include a ray and shark touch pool, an African penguin exhibit, a jelly gallery, and an "Exploration: Wild" ecosystems exhibit.

A bit further away is our Society's headquarters at the Robbins Museum of Archaeology and Native Culture, in Middleborough, Massachusetts. This is about 95 miles away, about a 1½ hour drive. The Museum offers numerous displays of Native life, including a diorama of the famous Wapanucket site, a gallery of photographs of local Native people, and a Walk through Time. We will offer free admission to the Museum to any visitors from the conference who come there on Sunday, November 5th from 10 AM – 2 PM. Just show your name tag!

Massachusetts Archaeological Society Officers:

President: Suanna Selby Crowley

Vice-President: Victor Mastone

Treasurer: David Burbine

Clerk: Susan Jacobucci

Corresponding Secretary: David McKenna

Museum Director: David DeMello

Bulletin Editor: Curtiss Hoffman

Archaeological Society of Connecticut Officers:

President: Nicholas Bellantoni

Vice-President: Dan Cruson

Treasurer: Cosimo Sgarlata

Secretary: Robyn Swan Filippone

Newsletter Editor: Lee West

Bulletin Editor: Lucianne Lavin

Program Director: Dawn Brown

ESAF Meeting Organizers:

Arrangements Chair:

Alan Smith

Program Co-Chairs:

Curtiss Hoffman

Ernest Wiegand

Registration Chair:

Samuel Bowden

Business Manager:

Roger Moeller

Tour Organizers (Mashantucket Pequot Museum):

Kevin McBride

David Naumec

SPONSORS

The 2017 ESAF meeting was made possible, in part, by contributions from the following organizations:

Massachusetts Archaeological Society, Inc.

Archaeological Society of Connecticut, Inc.

AECOM

The Ames companies

Archaeological and Historical Services

Beta Analytic, Inc.

Birchwood Archaeological Services

Boston Red Sox

Central Massachusetts Chapter, Massachusetts Archaeological Society

Chrysalis Archaeological Consultants

Forestry Suppliers, Inc.

Historical Perspectives, Inc.

Ingalls Archaeological Society

Marshalltown Company

Northeast/Eugene Winter Chapter, Massachusetts Archaeological Society

Primitive Technologies

Shooner American Redware

Southeast Massachusetts Chapter, Massachusetts Archaeological Society

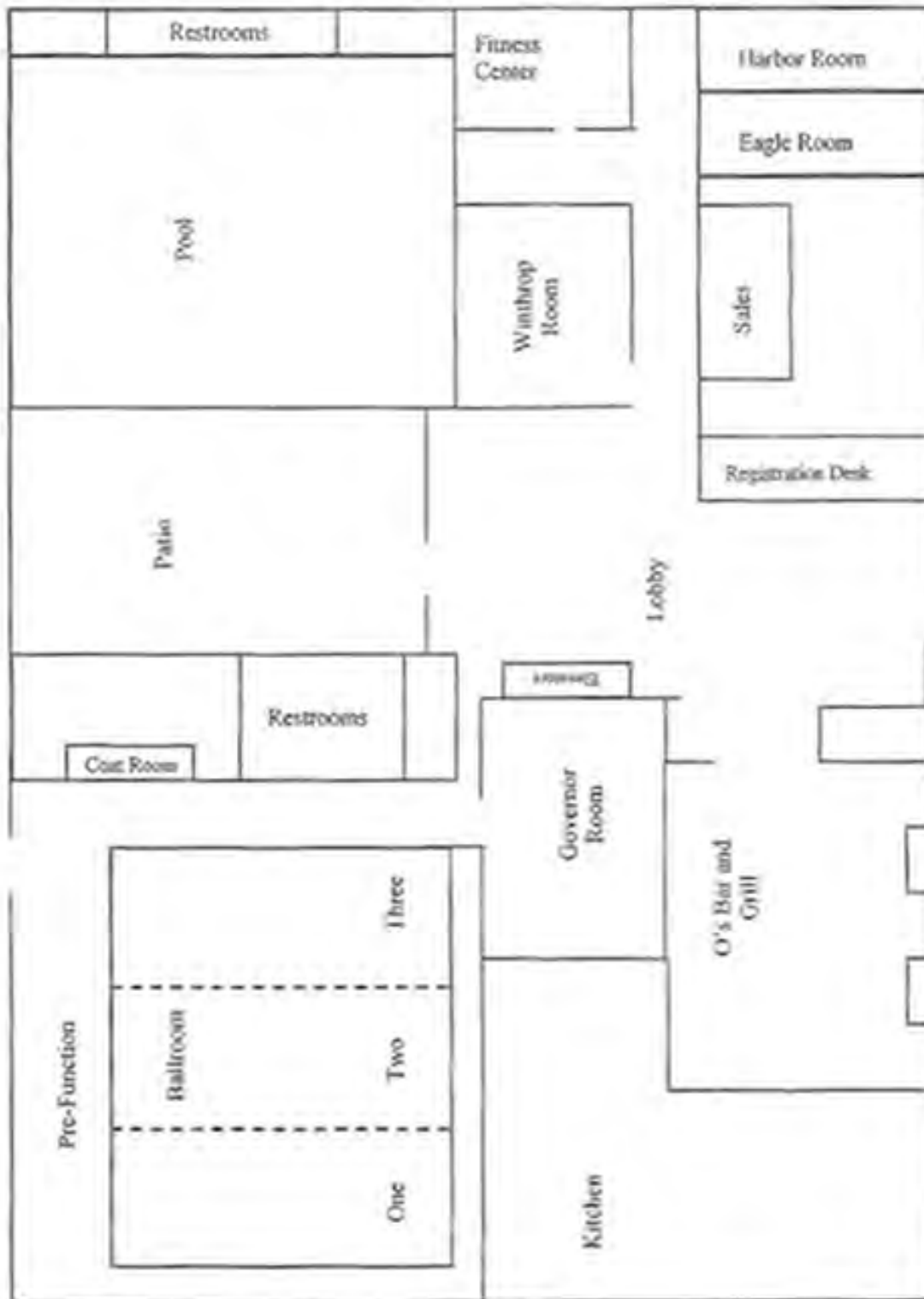
Stephen Earp Redware

Stony Knoll Archaeological Supply

Tobicollage.com

We also wish to acknowledge the assistance we have received in organizing the meeting from the staff of the New London Holiday Inn.

Holiday Inn Floor Plan

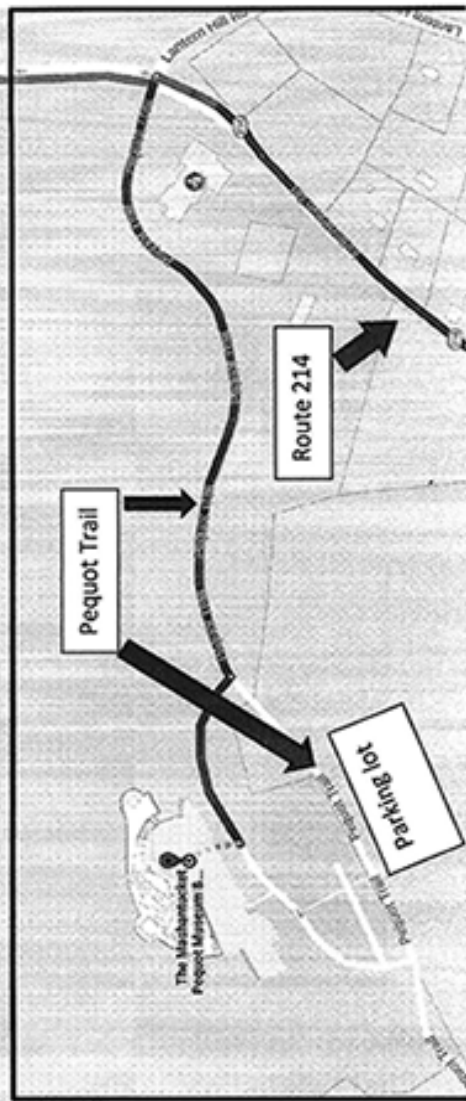
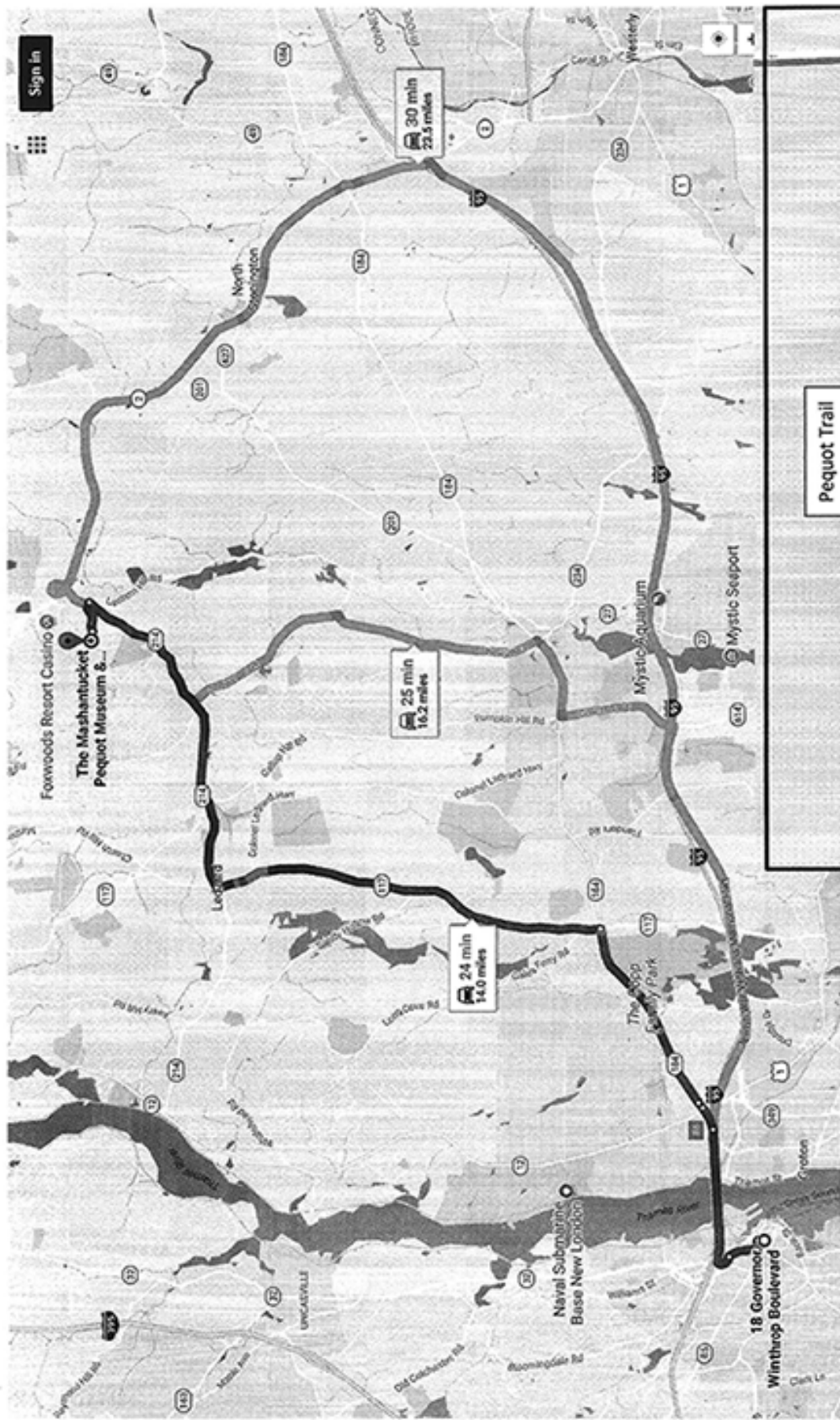


GOVERNOR WINTHROP BOULEVARD

Restaurants near Holiday Inn in New London, Connecticut

Restaurants

2 Wives Brick Oven Pizza 45 Huntington Street 860-447-9337 www.2wivespizza.com Lunch & Dinner	Bulkeley House 111 Bank Street 860-444-7753 www.bulkeley.com Lunch & Dinner	Captain Scotts Lobster Dock 80 Hamilton St 860-439-1741 www.captscotts.com Lunch & Dinner	<p style="text-align: center;">Discover where to go and what to do in Downtown New London!</p> <p style="text-align: center;">www.2wivespizza.com</p> <p style="text-align: center;">Go online for a comprehensive guide to the New London historic waterfront!</p>
The Bistro 165 Bank Street 860-990-5263 Dinner	Dev's on Bank Street 345 Bank Street 860-442-3387 www.devsonbank.com Weekend Brunch & Dinner	Daddy Jack's 181 Bank Street 860-444-8888 Dinner	
Kamp Dog 15 Broad Street 860-443-3000 www.kampdog.com Breakfast & Lunch All Day Closed Sundays	On the Waterfront 250 Pequot Ave 860-444-2800 Lunch & Dinner www.onthewaterfront.com	Muddy Waters Café 42 Bank Street 860-444-2232 www.muddywatersct.com Breakfast & Lunch	
Mi Casa #2 31 Golden St 860-596-0201 Lunch & Dinner	Tony D's 92 Huntington Street 860-443-9900 www.tonydsonrestaurant.com Lunch & Dinner	Washington Street Coffee House 13 Washington Street 860-437-0664 Breakfast & Lunch	
Ethnic Fare			
Shanghai Garden 150 Broad St. 860-443-7978 www.shanghaiardennewlondon.com	Lazy Leopard Thai 45 Bank Street 860-333-1329 11:30-10pm Lunch & Dinner	Mambo Bar & Restaurant* 194 Bank Street 860-444-6400 Lunch & Dinner	Northern Indian Restaurant 150 State Street 860-437-3978 Lunch & Dinner
Bars & Grills			
Copperwood Grill 24 Eugene O'Neill Drive 860-440-0706 www.copperwoodgrill.com Lunch & Dinner	Exchange Bar & Grill 74 Bank Street 860-447-1157 www.theexchangebarandgrill.com Lunch & Dinner	Octane Café 9 Tilley St 860-437-7303 Lunch & Dinner	The Social 208 Bank Street 860-442-6900 Lunch & Dinner
Hanafin's Irish Pub 312 State Street 860-437-9724 www.hanafinspub.com Lunch & Dinner. Weekend breakfast	High 5's 318 State Street 860-381-6070 Lunch & Dinner	Hot Rod Café* 114 Bank Street 860-447-2320 www.hotrodcafeinnewlondon.com Lunch & Dinner	Oasis Pub 16 Bank Street 860-447-3929 www.myspace.com/oasispub Late Night Music Venue
O'Neill's Brass Rail 57 Bank Street 860-443-6203 www.oneillsbrassrail.com Lunch & Dinner	State Street Saloon 158 State Street 860-574-9944 Lunch & Dinner	Fatboys Café 194 Bank St 860-574-9154 Lunch & Dinner	<p style="text-align: center;">*Limited menu items available after 10 PM</p>



**Holiday Inn New London – Mystic Area
to Mashantucket Pequot Museum
and Research Center**

GENERAL INFORMATION

REGISTRATION: Meeting registration is required for all events, including the Thursday tours, Friday reception, and Saturday banquet. The registration/information desk is located in the Pre-Function room outside the Ballrooms, and will be open from 3 PM – 7 PM on Thursday, and from 8 AM to 5 PM on Friday and Saturday.

NAME TAGS: Your name badge is coded according to the events for which you have registered. Please wear it at all ESAF functions.

BOOK ROOM: The Governor Room, with exhibits and book sales, will be open from 8 AM – 5 PM on Friday and from 8 AM – 4 PM on Saturday. Vendors may set up on Thursday evening. All exhibits and books must be removed by 5 PM on Saturday.

SILENT AUCTION: ESAF is holding a silent auction in the Pre-Function room and in the Book Room from 8 AM – 5 PM on Friday and from 8 AM – 4 PM on Saturday. Money from the silent auction goes to ESAF, ASC and MAS.

SESSIONS: Paper sessions will be held in Ballrooms 1 and 3 on Friday and Saturday. The Poster Session will be held in the Pre-Function Room on Saturday afternoon.

HOSPITALITY PARTY: In lieu of the traditional Canadian Beer Party, due to hotel regulations, the hospitality party will be held in the Governor Room on Friday evening from 7 – 10 PM. Registrants will receive two free drink tickets with their name tags. You may use either or both at this party, or at the banquet, for free drinks. Additional drinks will be available on a cash bar basis at both events.

ESAF BUSINESS MEETING: ESAF's General Business Meeting will be held at 5 PM on Saturday. It is open to all members. It will take place in the Winthrop Room.

ESAF BANQUET: The banquet is scheduled for Saturday at 7 PM, preceded by a social hour with cash bar (or use your free drink ticket as described above) starting at 6 PM. Your name badge is coded for the banquet if you registered in advance. Additional places at the banquet may be available. If interested, please inquire at the registration table. The banquet includes a buffet with Chicken Parmesan, Baked Salmon or Eggplant Rollatini. Package includes coffee, tea, ziti marinara sauce, house salad, bread and butter, chef's choice of potato, vegetable and dessert. You may attend the lecture following the banquet without attending the banquet. The lecture starts at 8 PM.

General Conference Schedule

Thursday November 2:

Tour 10AM-5PM, using carpools from the hotel. The tour includes the Mashantucket Pequot Museum and Research Center and the adjacent 17th Century Fort. It will also include an insider's look at newly recovered 17th century Pequot War artifacts from the Battle of Mistick Fort and an archaeology labs tour. A Native American lunch at the museum restaurant/café is available or bring your own lunch.

Registration 3PM-7PM -- Ballroom Foyer

Bookroom/Silent Auction 5PM-7PM – Governor's Room, Pre-function

Friday, November 3:

Registration 7AM-5PM -- Pre-function

Sessions 8AM-4PM -- Ballrooms 1 and 3

Bookroom/Silent Auction 8AM-4:30PM – Governor Room, Pre-function

ESAF Executive Board Meeting -- 12:00AM-2:00 PM – Harbor Room – Buffet Lunch

Canadian-American Friendship Party 7-10PM – Governor Room, Pre-function

Saturday, November 4:

Registration 7AM-5PM, Pre-function

Sessions 8 AM-4:30 PM-- Ballrooms 1 and 3

Bookroom/Silent Auction 8AM-5:00 PM -- Governor Room, Pre-function

ESAF General Business Meeting 5:00-6 PM – Winthrop Room

Social Hour/Cash Bar 6-7PM – Ballroom 2

Banquet Buffet 7PM-8PM – Ballroom 2

Chicken Parmesan, Baked Salmon or Eggplant Rollatini. Package includes coffee, tea, ziti marinara sauce, house salad, bread and butter, chef's choice of potato, vegetable and dessert.

Guest Banquet Speaker 8PM -- Ballroom 2

Dr. Kevin McBride, Mashantucket Pequot Museum and Research Center, University of Connecticut

"New Perspectives on the Archaeology of Seventeenth Century Battlefields and Domestic Sites"

Detailed Conference Schedule

Friday morning, November 3

Session A: Connecticut Archaeology in the 21st. Century – Part 1 – Ballroom 1

Session Chairs: Sarah Sportman and Zac Singer

- 8:00-8:35 a.m. Welcome: Dean Knight, ESAF President; Nick Bellantoni, ACS President; Al Smith, MAS Program Organizer
- 8:35-8:55 a.m. *Introduction: Connecticut Archaeology in the 21st. Century.* (Sarah Sportman (PAST, Inc./AHS, Inc.) and Zac Singer (Institute for American Indian Studies/the Lost Towns Project))
- 8:55-9:15 a.m. *The Paleoindian Period in Connecticut: Forty Years after the Discovery of Templeton.* Zac Singer (Institute for American Indian Studies/the Lost Towns Project)
- 9:15-9:35 a.m. *Petrographic Identification of the Rocks Used by Tool Knappers in Connecticut.* (Barbara Calogero, independent consultant)
- 9:35-9:55 a.m. *Contribution from the West River Valley in Woodbridge, Connecticut to Current Models of New England Prehistory.* (Cosimo Sgarlata, Western Connecticut State University)
- 10:00-10:15 a.m. . Break
- 10:15-10:35 a.m. *Revisiting the Relationship Between the Narrow Stemmed and Susquehanna Traditions: New Data from the Susquetonscut Brook Valley, Eastern Connecticut.* (Ora Elquist, PAL, Inc.)
- 10:35-10:55 a.m. *The Brush Island Site: A Single-component Orient Phase Site in Coastal Connecticut.* (Ernest Wiegand, Norwalk Community College)
- 10:55-11:15 a.m. *The Hicock-Benson-Palmer Site: A Case Study in Salvage Archaeology.* (Paul Wegner, Institute for American Indian Studies)
- 11:15–11:35 a.m. *Analysis of Sturgeon Fishing Encampments from Block Island, Rhode Island.* (David Wilson (AHS, Inc. /Mashantucket Pequot Museum and Research Center, and Kevin McBride (Mashantucket Pequot Museum and Research Center)

Session B: Window of Opportunity: Archaeology in Rhode Island After Hurricane Sandy -- Ballroom 3

Session Chair: Timothy Ives

On October 28, 2012, Hurricane Sandy eroded Rhode Island's archaeologically sensitive coastlines, particularly on Block Island and along the South Coast. In response, the Rhode Island Historic Preservation and Heritage Commission authorized surveys to identify and characterize damaged coastal archaeological sites. This work, most of which was supported by an Emergency Supplemental Historic Preservation Fund grant from the National Park Service, seized a window of opportunity to access sites along highly informative exposures, many of which have since progressively degraded and, in some instances, eroded completely. These surveys substantially advanced local understanding of coastal archaeology. This session features presentations by several archaeologists involved with this work, who will discuss operational challenges, new perspectives of the past, and the future of coastal archaeology.

- 8:35-8:55 a.m. *Wind and Waves: Coastal Storms and the Loss of Rhode Island's Ancient Past* (Joseph Waller, PAL Inc.)

8:55-9:15 a.m. *New Perspectives on the Native Ethnology and Archaeology of Block Island.* Kevin McBride (Mashantucket Pequot Museum and Research Center/University of Connecticut)

9:15-9:55 a.m. *Administrative Challenges of Rhode Island's Hurricane Sandy Archaeological Surveys* (Timothy Ives, Rhode Island Preservation and Heritage Commission)

10:00-10:15 a.m. Break

Session C: Contributed Papers -- Ballroom 3

10:15-10:35 a.m. *St. Lawrence Iroquoians in Northern New York State: An Update of Present Research.* Timothy Abel (Consulting Archaeologist)

10:35-10:55 a.m. *Researching Lithic Technological Variation in the Late Archaic Period: a History and Analysis of the Broadspear Assemblage Type.* (Amy Fox (University of Toronto)

10:55-11:15 a.m. *Revisiting the Flatley Brook Chert Quarry, Washington County, New York.* Ingrid-Morgane Gauvine (University at Albany)

11:15-11:35 a.m. *A Brief History of Archaeology Studies in Maryland with Biographical Sketches of Notable Maryland Archaeologists and Avocational Archaeologists 1870-2017.* Stephen Israel (Archaeological Society of Maryland, Inc.)

12:00-2:00 p.m. Lunch

12:15 p.m. ESAF Board Meeting

Friday Afternoon, November 3

Session D: Connecticut Archaeology in the 21st. Century – Part 2 -- Ballroom 1

Session Chairs: Sarah Sportman and Zac Singer

2:00-2:20 p.m. *Landscape Environmental Reconstruction Based on Underwater, Terrestrial, and Intertidal Core Extraction in Norwalk and Westport, Connecticut.* (David E. Leslie (PAST, Inc. /AHS, Inc.), William Ouimet (University of Connecticut) and Sarah P. Sportman (PAST, Inc., /AHS, Inc.)

2:20-2:40 p.m. *Settling Connecticut: A 17th Century Component in Old Wethersfield.* Sarah P. Sportman and Ross K. Harper (PAST, Inc., /AHS, Inc.)

2:40-3:00 p.m. *A 17th Century Fortified Farmstead in Glastonbury, Connecticut.* (Brian Jones, Office of State Archaeology/University of Connecticut)

3:00-3:20 p.m. *Developing New Models & Methods for Identifying Native American Historic Sites in Southern New England.* (Kevin McBride (Mashantucket Pequot Museum and Research Center/University of Connecticut) and David Naumec (Mashantucket Pequot Museum and Research Center)

3:20-3:40 p.m. *Mapping Stone Walls and Relict Land Use Features with LIDAR Data.* (William Ouimet (University of Connecticut)

3:40-3:55 p.m. Break

3:55-4:15 p.m. *The Edgarton Farmstead: Eighteenth-Century Occupation at the SB 11 Site in Franklin, Connecticut.* (John M. Kelly (PAL, Inc.)

4:15-4:35 p.m. *The Dead Shall Be Raised: Multidisciplinary Analysis of Four 19th Century Human Skeletons, Christ Church Catholic Cemetery, New Haven, Connecticut.* (Gary P. Aaronson (Yale University), Lars Efrén-Schmitz (University of California at Santa Cruz), George Kamenov (University of Florida-Gainesville), John Krigbaum (University of Florida-Gainesville), Gerald Collogue (Quinnipiac University), Christina Warriner (University of Oklahoma), Anthony Grieg, Daniel DeLuca, Howard Eckels, Roald Byciewicz (Central Connecticut State University), Tania Grurich (Quinnipiac University), Natalie Pellatier (Quinnipiac University), Sarah Brownlee (Yale University), Ana Marichal (Yale University), Kylie Williamson (Yale University), Yukiko Tonoike (Yale University), Nicholas F. Bellantoni (emeritus CT State Archaeologist, University of Connecticut)

Session E: Contributed Papers -- Ballroom 3

- 2:00-2:20 p.m. *PaleoAmerican Archaeology in Virginia.* Wm. Jack Hranicky (Archaeological Society of Virginia)
- 2:20–2:40 p.m. *Preliminary Report on the Proposed Griffin Brook Archaeological District in Central Connecticut.* Kerry Lynch (University of Massachusetts Archaeological Services)
- 2:40-3:00 p.m. *A Ground Slate Point Found on the Hudson River Estuary.* (John Phillips and Scott Kostiw (Lower Hudson Louis A. Brennan Chapter of the New York State Archaeological Association)
- 3:00-3:20 p.m. *Geoarchaeological Investigations within the Connecticut River Valley below Turners Falls.* Nathan Scholl (Gray & Pape, Inc.)
- 3:20-3:40 p.m. *An Updated Chronology of Martha's Vineyard: AMS Dates from the Hornblower II and Frisby Butler Sites.* Jessica Watson (University at Albany)
- 3:40-3:55 p.m. Break

Saturday morning, November 4

Session F: Avocational Contributions to Connecticut Archaeology – Ballroom 1

Session chairs: Mandy Ranslow and Jeremy Pilver

Avocational, amateur, volunteer archaeologists are a sample of terms used to describe the individuals who engage in the field of archaeology but who may not have professional education or training in the subject. While professional archaeologists have a variety of views on working with the non-professionals, there is no denying their contributions to the field of archaeology, especially at the local level. Connecticut has been, and still is, home to several long-established societies founded, organized, and led by avocational archaeologists. Through site identification, excavation, research, and publication avocational archaeologists have significantly increased our collective knowledge of the Native and post-contact history of Connecticut. This session highlights the benefits of working with the public and the contributions the avocational community has made to Connecticut archaeology. Presentations will lay out the history of avocational work in the state, the importance of an informed and engaged community, and propose some future avenues for how professional and non-professional archaeologists can work together.

- 8:00-8:20 a.m. *Avocational Archaeology in Connecticut: Past and Present*. Mandy Ranslow (Friends of the Office of State Archaeology/Connecticut Dept. of Transportation) and Jeremy Pilver (Friends of the Office of State Archaeology/Farmington High School)
- 8:20-8:40 a.m. *A Beacon of Light from the Past into the Future: How Avocational Archaeologists Built a Museum and Ongoing Support for Archaeological Research in the Litchfield Hills*. (Sharon Clapp and Craig Nelson (Institute for American Indian Studies)
- 8:40-9:00 a.m. *Ales Well that Ends Well: Archaeological Research at the Sun Tavern, Fairfield, Connecticut*. Robert Wallace (Archaeological Society of Connecticut)
- 9:00-9:20 a.m. *Norwalk Community College's "Archaeology as an Avocation" Certificate Program: Training the Citizen Archaeologist Since 1975*. Ernest Wiegand (Norwalk Community College)
- 9:20-9:40 a.m. *Five Alarm Archaeology: Fire Service Lessons for Avocational Archaeologists*. Scott Brady (Friends of the Office of State Archaeology)
- 9:40-10:00 a.m. *The Paleo-Indians of Farmington and Connecticut*. Andrew Leboeuf (University of Connecticut)

10:00-10:15 a.m. Break

- 10:15-10:35 a.m. *Connecting Connecticut Boy Scouts to Camp History through Archaeology*. Joseph Kierwuk (Central Connecticut State University)
- 10:35-10:55 a.m. *Archaeological Potentialities: The Future of Public Archaeology and Stewardship*. Mandy Ranslow (Friends of the Office of State Archaeology/Connecticut Department of Transportation) and Jeremy Pilver (Friends of the Office of State Archaeology/ Farmington High School)

Session G: Current Archaeological Research in Massachusetts-- Ballroom 3

Session chair: Curtiss Hoffman

..

- 8:20-8:40 a.m. *Ye Names of Ye Rivers: The Case for Wanaskwiwam*. Mary Ellen Lepionka (Massachusetts Archaeological Society)
- 8:40-9:00 a.m. *From Hills to Islands: Ancient Adaptations by Native Americans to Boston Harbor*. Marty Dudek (Commonwealth Heritage Group)
- 9:00-9:20 a.m. *A Historical Context for Stone Monument Sites*. Curtiss Hoffman (Bridgewater State University)
- 9:20-9:40 a.m. *The Language of the Dead*. Rolf Cachat-Schilling (Oso:ah Foundation)
- 9:40-10:00 a.m. *Fifty Years of Collecting from a Late Archaic Site in Danvers, Massachusetts*. David McKenna (Massachusetts Archaeological Society)

10:00-10:15 a.m. Break

Session H: Huronia Before and After Champlain -- Ballroom 3

Dean Knight – Session Chair

- 10:30-10:50 a.m. *An Historical Overview of Samuel de Champlain*. Jamie Hunter (Hunter Consulting)
- 10:50-11:10 a.m. *Huron Village Life at the Time of Champlain*. Dean Knight (Wilfrid Laurier University)
- 11:10-11:30 a.m. *Metal Trade Goods from the Ball Site*. Lisa Anselmi (SUNY Buffalo)
- 11:30-11:50 a.m. *Shell and Glass Beads from the Ball Site*. Jamie Hunter (Hunter Consulting)

12:00-1:30 Lunch

Saturday afternoon, November 4

Session I: Contributed Papers -- Ballroom 3

- 1:30-1:50 p.m. *The Walter Landgraf Soapstone Quarry: Supply, Demand, and Disruptive Innovation at a 3,000-Year-Old Quarry Site.* Ken Feder (Central Connecticut State University)
- 1:50-2:10 p.m. *Did Clovis Hunters Hamstring the Bowser Road Mastodon?* Lerick Allen
- 2:10-2:30 p.m. *The Cultural Heritage Crisis in the Middle East: Recent Events and Issues.* Mike Zimmerman
- 2:30-2:50 p.m. *Changes in Burial Practices during the Late Prehistoric Period, c. AD1050-1635, of Southwestern Pennsylvania.* John P. Nass, Jr.
- 2:50-3:10 p.m. *The Archaeology of Wampum: Decorative Wampum from Burial Contexts.* Marshall Becker, West Chester University
- 3:15-3:30 p.m. Break

Session J: Always a McBridesmaid, Never a McBride: Papers in Honor of Dr. Kevin McBride--Ballroom 1

Session Chairs: Megan Willison, William Farley and M. Gabriel Hrynick

In these papers, we celebrate Kevin's contributions to the archaeology and ethnohistory of New England, landscape archaeology, community engagement work, the archaeology of submerged and eroding coastlines, and battlefield archaeology. An ESAF in Connecticut is an appropriate venue for this session not just because of Kevin's singular contributions to the archaeology of the state, but because though showing no signs of imminent retirement, Kevin will only show up to a session in his honor if it is held in his backyard.

- 1:30-1:50 p.m. *Introductory Remarks.* Megan Willison, William Farley and M. Gabriel Hrynick
- 1:50-2:10 p.m. *Another Paper about Woodland Period Sedentism: Domestic Architecture in New England and the Maritime Peninsula.* (William Farley, Southern Connecticut State University, and M. Gabriel Hrynick, University of New Brunswick)
- 2:10-2:30 p.m. *McBride Meets Microfossils: An Adventure in New England Phytoliths and Starches* (Krista Dotzel, University of Connecticut)
- 2:30-2:50 p.m. *Households, Metals and Seventeenth Century Settlement Patterns: A Preliminary Analysis of Indigenous Domestic Sites in Southern Connecticut.* (Megan Willison, University of Connecticut)
- 2:50-3:05 p.m. *Squirrelly Reflections on Dr. Kevin McBride* (Akeia Benard (New Bedford Whaling Museum))
- 3:15-3:30 p.m. Break
- 3:30-3:45 p.m. *A Roast (well-done) of Dr. Kevin McBride* (Ken Feder, Central Connecticut State University)

- 3:45-4:00 p.m. *Another Roast of Dr. Kevin McBride* (Ashley A. Bissonnette, Eastern Connecticut State University/Mashantucket Pequot Museum and Research Center)
- 4:00-4:15 p.m. *Dr. Kevin McBride, Another Perfectly Adequate Prehistorian Lured to the Dark Side of Historical Archaeology* (Brian Jones, Office of State Archaeology)
- 4:15-4:30 p.m. Discussant: Dr. Nicholas Bellantoni

Poster Sessions: Saturday afternoon 1:00-4:00 – Ballroom Foyer

Late Pleistocene/Early Holocene Landscape Analysis at the Snyder Paleoindian Complex, New Jersey. Jennifer Rankin (Temple University/AECOM), Gabrielle Perry (Temple University/AECOM), Michael Stewart (Temple University/New Jersey Historic Preservation Office), Michael Carr, Zachary Curran, Karen Kopeznski, Ilya Burnevich,, Christopher Sparacio, Seok Choi Chong, Patricia Hansell, and Anthony Ranere (all temple University), Logan Wiest (Baylor University)

A Brief Look at Iroquoian Pottery Motifs. Jessica Vavrsek (University at Albany)

CONFERENCE ABSTRACTS

(Note: letters in parentheses after paper titles indicate the session in which the paper will be given)

Aaronsen, Gary P. ¹, Fehren-Schmitz, Lars ², Krigbaum, John ³, Kamenov, George ³, Collogue, Gerald ⁴, Warriner, Christina ⁵, Grieg, Anthony⁶, DeLuca, Daniel ⁶, Eccles, Howard⁶, Byciewicz, Romauld ⁶, Grurich, Tania ⁴, Pellatier Natalie ⁴, Brownlee, Sarah ¹, Marichal, Ana, ¹ Williamson, Kylie ¹, Tonoike, Yukiko ¹, Bellantoni, Nicholas F. ⁷

1. Department of Anthropology, Yale University
2. Department of Anthropology, University of California Santa Cruz
3. Department of Anthropology, University of Florida
4. Department of Radiology, Quinnipiac University
5. Department of Anthropology, University of Oklahoma
6. Department of History, Central Connecticut State University
7. *Emeritus* CT State Archaeologist, University of Connecticut

The Dead Shall Be Raised: Multidisciplinary Analysis of Four 19th Century Human Skeletons, Christ Church Catholic Cemetery, New Haven, Connecticut (D)

In July 2011, renovations to Yale-New Haven Hospital accidentally exposed Christ Church Cemetery, Connecticut's first Catholic burying ground. While active between 1833 and 1851, both the church and its cemetery disappeared from public records, making the discovery a surprise. Four relatively well-preserved adult skeletons were recovered with few artifacts other than coffin hardware; three burials were stacked in the same burial shaft. These individuals provide biocultural evidence of New Haven's Industrial Revolution. This presentation will discuss the recovery of the individuals and results of multifaceted analyses including forensic pathology, radiography, isotopic analyses, Nuclear and Mitochondrial DNA analyses, which illuminate a previously undefined part of the city's rich history. The combined expertise of biological, archaeological, and historical researchers collectively interprets socioeconomic and cultural identity better than anyone could alone.

Abel, Timothy J. (Consulting Archaeologist)

St. Lawrence Iroquoians in Northern New York: An Update of Present Research (C)

For over a century and a half, archaeologists have pondered the numerous Iroquoian settlements in Jefferson and St. Lawrence Counties, New York. A flurry of early excavations in the early 20th century led to now-defunct conclusions about their identity and culture. Modern systematic excavations have been conducted at a handful of the sites. An inventory and seriation of the sites was accomplished in the 1980s. Questions about subsistence and settlement have begun to be explored. Site chronology is still poorly documented, again, is beginning to be addressed. Theories about their prehistoric origins and fate at the interface of history remain to be tested. This paper summarizes past and present research on these important research questions.

Anselmi, Lisa (SUNY Buffalo)

Metal Trade Goods from the Ball Site (H)

European-introduced smelted copper and/or brass kettles and sheet metal were used as raw material by Native peoples in Northeastern North America beginning with their earliest contacts and it continued to be used well into the Colonial period. This material was recycled from the introduced shapes into forms, such as aglets and conical constructs, tubular beads, and triangular projectile points, which were more useful to their creators. This paper presents a comparison of conical constructs from sites attributed to the Wendat, Seneca, and Susquehannock in the seventeenth centuries. Illustrative examples are drawn from the approximately contemporaneous Wendat Ball site, the Seneca Cameron and Factory Hollow sites, and the Susquehannock Schultz and Washington Boro localities.

Allen, Lerick (Student, Graduate History Program, Montana State University)

Did Clovis Hunters Hamstring the Bowser Road Mastodon? (I)

The archaeological recovery of the Bowser Road mastodon in Orange County, New York (2013 - 2015) revealed many surprises. In addition to the proboscidean butchery by humans, twenty-one split rib atlatls, and evidence of ritual activity, were found the human-made chop marks on the animal's heel bone. While these chop marks might be evidence of butchery and disarticulation processes, another possibility arises: Did Clovis hunters hamstringing this creature? Using Greek and Roman historian writings, combined with accounts of 18th, 19th, and early 20th century African explorers and big game hunters who witnessed indigenous people hamstringing elephants, a case is made for the cross-applicability of this immobilizing technique on mastodons and mammoths. Also explored are elephant foot and ankle anatomy, the attributed uses of large Clovis bifaces, and the results of an experimental archaeology session where a large Clovis biface replica is hafted to create an Achilles tendon-severing axe.

Becker, Marshall (West Chester University)

The Archaeology of Wampum: Decorative Wampum from Burial Contexts (I)

The recovery of true wampum from archaeological sites enables us to date the origins of this commodity to the last decade of the sixteenth-century. The origins of wampum bands have yet to be dated with precision, but their appearance in graves provides enormous potential for recognizing how ornamental examples were used in daily life. The looting of graves, as documented by historical accounts as well as archaeology, has long been a problem for anthropologists trying to reconstruct cultural uses of these specific types of shell beads. The documents help us to understand a great deal about the composition of ornamental wampum bands, but only the archaeological record reveals details of design and composition. The eventual publication of the records from the archaeology of

Pequot sites will vastly enhance our understanding of cultural specific uses for wampum. This paper provides only a preliminary record as an introduction to this subject.

Benard, Akeia A.F. (New Bedford Whaling Museum)

Squirrely Reflections on Dr. Kevin McBride (J)

While attending a Food and Wine Festival in Newport, RI, I sat at a table with a woman I did not know. To my surprise, as we drank our wine and told each other about ourselves, she *beamed* when I mentioned I was an archaeologist who graduated from UConn. She (literally) screamed out, “You *know* Kevin McBride? You *worked* with him?! That must have been great! He’s like THE guy in archaeology here!” After getting over the initial shock of a non-academic, in such a non-academic setting, getting very excited (a little too excited—blame it on the wine) over my PhD advisor, I did quite a bit of reflection on not only Kevin’s contributions to the field, but his contributions to my development as a scholar and my career. This presentation will overview what I consider to be the most significant “Kevin moments” I can contribute to this forum.

Bissonette, Ashley (Eastern Connecticut State University/Mashantucket Pequot Museum)

Another Roast of Dr. Kevin McBride (J)

No abstract available.

Brady, Scott (Friends of the Office of State Archaeology)

Five Alarm Archaeology: Fire Service Lessons for Avocational Archaeologists (F)

I will outline how firefighting practices and skills gleaned during a twenty-five year career with a major urban fire department can be applied to avocational archaeology. The discussion will focus on using fire service techniques to improve your value as an avocational archaeologist or can be used to manage and mentor neophytes to archaeological field work. Examples from four years of excavations under the direction of the Connecticut Office of State Archaeology will be used to illustrate how these techniques can be implemented.

Cachat-Schilling, Rolf (Oso:ah Foundation)

The Language of the Dead (G)

Using data collected in Western Massachusetts for the study on proposed Native ceremonial stone groupings published in Fall 2016 *Bulletin of the Massachusetts Archaeological Society*, we get a deeper look into material selection for the proposed Nipmuc relics that describes a highly consistent ritual aesthetic. This consistent selection of materials and construction is coupled with a consistent pattern of distribution for different relic types. Both of these phenomena seem arbitrary and meaningless, until placed within a ritual context specific to the local indigenous culture. Documented aspects of Northeastern Algonquian ceremony, in combination with tribal oral tradition and personal familial transmission, make clear the motive and template for the pattern we now see in stone.

Calogero, Barbara L. (Private contractor)

Petrographic Identification of the Rocks Used by Tool Knappers in Connecticut (A)

In 1982, I began a study of the rock types used for tools in Connecticut's central river valleys and uplands. Many of the rocks used millennia ago are difficult to identify as hand specimens. Therefore, in collaboration with geologist Anthony Philpotts, the study was expanded to include chemical analysis and, more specifically, petrographic analysis. Samples of waste flakes from 19 sites were prepared in thin section and analyzed microscopically. I describe the study and the many surprises revealed by this method of analysis. The study now includes 46 sites in Connecticut and 70 in the other New England states and eastern New York.

**Clapp, Sharon (Institute for American Indian Studies Museum & Research Center), and
Nelson, Craig (Institute for American Indian Studies Museum & Research Center)**

"A beacon of light from the past into the future": How Avocational Archaeology Built a Museum & Ongoing Support for Archaeological Research in the Litchfield Hills (F)

The Institute for American Indian Studies Museum & Research Center was founded over forty years ago based on an avocational passion that continues to sustain archaeological research on Native American culture in Northwestern Connecticut. The Shepaug Valley Archaeological Society started in 1968 "with seven people and zero dollars" according to its late President and the museum's primary founder, Ned Swigart. By 1974, with support of the local community, the group had grown, successfully raised funds, and broken ground on a museum that would become the home for its collections. This presentation, offered by two avocational archaeologists who are also trustees of the museum and officers in the affiliated Litchfield Hills Archaeology Club, will highlight some of their recent digs with Dr. Lucianne Lavin in Warren and Kent as well as the museum's support of work being done at the paleo-Indian Templeton site (6LF21) by Research Associate Zachary Singer, PhD. The session will also discuss the presenters' work with public education and outreach through avocational archaeology.

Dotzel, Krista (PhD Student, University of Connecticut)

McBride Meets Microfossils: An Adventure in New England Phytoliths and Starches (J)

This presentation will discuss microfossil research methods and applications by highlighting current phytolith and starch research at sites in New England, particularly samples from the Early Woodland site RI 1428 on Block Island, RI. Due to preservation issues, botanical remains in New England are typically rare and research represents a way forward in addressing this gap in knowledge. Recent investigations into phytoliths extracted from carbonized food residues taken from RI 1428 suggest that grass grains did not play a substantial role in subsistence at that site.

Dudek, Marty (Commonwealth Heritage Group)

From Hills to Islands: Ancient Adaptations by Native Americans in Boston Harbor (G)

Some 6,000 years ago, Boston was well inland from the ocean, but sea levels rose, inundating the coastal plain around the hills east of Boston. Ancient Native Americans lost no time adapting to the change. The Spectacle Island shell midden site, excavated for Boston's Big Dig Project, had a well-preserved record of several thousand years of clam bakes, fishing, and other activities. The talk gives an overview of the site and the significant findings from analyses of the data recovery.

Elquist, Ora (The Public Archaeology Laboratory, Inc.)

Revisiting the Relationship between the Narrow Stemmed and Susquehanna Traditions: New Data from the Susquetonscut Brook Valley, Eastern Connecticut (A)

Archaeological investigations of a pipeline corridor paralleling a 12-mile section of the Susquetonscut Brook Valley provided a large sample of data representative of its occupational history between the Early Archaic and Late Woodland periods. Archaeological and radiocarbon data are illustrative of changing Archaic settlement patterns in general, and how they relate to the debate concerning the Narrow Stemmed and Susquehanna traditions in particular. Preliminary comparison of the data from the Susquetonscut Brook Valley to other areas of Eastern Connecticut suggest subregional variability in the occupational histories of Narrow Stemmed and Susquehanna traditions.

Farley, William A. (Southern Connecticut State University), Willison, Megan (University of Connecticut), and Hrynich, Gabriel (University of New Brunswick)

Introductory Remarks (J)

In these papers and "roasts" we celebrate Kevin's contributions to the archaeology and ethnohistory of New England, landscape archaeology, community engaged work, the archaeology of submerged and eroding coastlines, and battlefield archaeology. An ESAF in Connecticut is an appropriate venue for this session not just because of Kevin's singular contributions to the archaeology of the state, but because though showing no sign of imminent retirement, Kevin will only show up to a session in his honor if it's held in his backyard.

Farley, William A. (Southern Connecticut State University), and Hrynich, Gabriel (University of New Brunswick)

Another Paper About Woodland Period Sedentism: Domestic Architecture in New England and the Maritime Peninsula (J)

In his 1984 dissertation, Kevin McBride offered anthropological criteria for Woodland period villages: year-round occupation accompanied by a wide range of tool and feature classes. In that same year, recognizing that changes in architecture may correlate to changes in social organization and economy, he published about the household as an economic unit in Southern New England. The presence of true

villages in Woodland period New England remains contentious, and is among the factors that led McBride and others to question the relationships between maize horticulture and villages. Here, we return to the household to compare Woodland period domestic architecture from southern New England to the Maritime Peninsula (Maine and the Maritime Provinces), where maize was not practiced prehistorically. Houses became larger on average in the Late Woodland in Southern New England, but also became more diverse, possibly corresponding to the adoption of horticulture. In contrast, we find a steady increase of architectural size for Maritime Peninsula hunter-gatherers through the Woodland period.

Feder, Ken (Central Connecticut State University)

The Walter Landgraf Soapstone Quarry: Supply, Demand, and Disruptive Innovation at a 3,000-Year-Old Quarry Site (I)

Soapstone was a raw material valuable for the production of items used in food preparation, especially cooking vessels, in eastern North America before the development and spread of ceramic technology. Durable, waterproof, fireproof, nearly impervious to thermal shock and, at the same time, soft and easy to extract and then sculpt into a desired shape, the demand for this raw material was high but supply was geographically constrained. The Walter Landgraf Soapstone Quarry is an intact soapstone extraction site in northwestern Connecticut. At least five unfinished—“unharvested”—bowl forms were found on the primary soapstone source at the main quarry location. Excavation of the quarry and nearby quartzite cobble workshops has provided an opportunity to investigate the soapstone industry just at the point when the “disruptive innovation” of ceramic technology was replacing soapstone as the raw material of choice in the production of cooking vessels in southern New England.

Feder, Ken (Central Connecticut State University)

A Roast (well-done) of Dr. Kevin McBride (J)

Kenny shares his reminiscences of the late Dr. Kevin McBride . . .

Fox, Amy N. (PhD Candidate, Department of Anthropology, University of Toronto)

Researching Lithic Technological Variation in the Late Archaic Period: A History and Analysis of the Broadspear Assemblage Type. (C)

The broadspear toolkit is a stone tool type unique in its form and versatility from those of millennia prior. Excavated broadspear assemblages are present in Late/Transitional Archaic contexts across the Northeast and are often understood in terms of their place within locally situated lithic typologies. However, the overall phenomenon of the broadspear toolkit is less readily known due to a lack of interregional interpretive frameworks available for the Late Archaic Period. This history of analysis does not allow for the successful production of interregional patterns, which leads to the reproduction of only localised understandings of Archaic lifeways. The present paper discusses the challenges of researching geographically large-scale artifact patterns using broadspear collections as a case study in

an effort to lay the foundation for the author's research on technological learning networks and interregional cultural dynamics in the Late/Transitional Archaic Period.

Gauvine, Ingrid-Morgane G. (Department of Anthropology, University at Albany, SUNY)

Revisiting the Flatly Brook chert quarry, Washington County, NY (C)

The Flatly Brook quarry was subject to a limited excavation in 1991 by Jack Holland and Roger Ashton. The central point of the site is an outcrop of a green to black Ordovician chert (referred to as Normanskill or Hudson Valley chert) which would not have been accessible prior to the Early Holocene. The original investigation provided a multitude of hammerstones and roughly 800 pounds of debitage (all of which was reinterred), yet no diagnostic materials were recovered. In 2017, a workshop neighboring the outcrop was investigated to clarify the chronology of the site and to characterize the lithic assemblage of the locus. This paper discusses the organization of the quarry and its surrounding area, and presents the results of the investigation of the workshop associated with the outcrop.

Hoffman, Curtiss (Bridgewater State University)

A Historical Context for Stone Monument Sites (G)

For the past 4 years, I have undertaken a comprehensive inventory of sites containing stone structures across the eastern seaboard of the U.S. and Canada, amassing a database of over 5,100 sites and over 35,000 individual structures. While some state historical commissions consider most, or even all such sites to be the result of EuroAmerican farming activities, and cite a lack of historical evidence for their association with indigenous people, there are in fact abundant historical references to them as Native shrines throughout the region. While the claims for exclusive EuroAmerican origin can also be refuted on the grounds of archaeological and geographic evidence, the historical record supports the strong claims made by current indigenous peoples that these monuments are their sacred places.

Hranicky, Wm Jack (RPA)

PaleoAmerican Archaeology in Virginia (E)

This illustrated paper presents over ten years of early American research in Virginia and Maryland. It covers 12 pre-Clovis sites, a summary of hundreds of Pleistocene/Holocene artifacts, and relies on various professional papers on this topic. It discusses the change over from blade/core technology to biface/core technology around the Younger-Dryas geological event. The paper shows artifacts that have not been seen in the archaeological literature. Several ongoing site investigations are shown showing volunteers. A prehistoric calendar is suggested which argues for a 10,000 years Pleistocene occupation in Virginia which starts with the now famous Cinmar bipoint. There are six sites in the Middle Atlantic area with date around or older than 16,000 years.

Hunter, Jaime (Hunter Consulting)

An Historical Overview of Samuel de Champlain (H)

No abstract available.

Hunter, Jaime (Hunter Consulting)

Shell and Glass Beads from the Ball Site (H)

No abstract available.

Israel, Stephen (Archaeological Society of Maryland, Inc.)

A Brief History of Archaeology Studies in Maryland with Biographical Sketches of Notable Maryland Archaeologists and Avocational Archaeologists, 1870 to 2017 (C)

I began the “Maryland Archaeology: Past Portrait Project” because I came across many undocumented terrestrial-and-underwater archaeologists and advocational archaeologists in Maryland, and realized they provided a large range of information on Maryland’s forgotten, and unacknowledged archaeological activities and accomplishments. My goals for this paper were to document, to the extent possible, many of the forgotten contributors, of the late 19th century, 20th century, and early 21st century archaeological surveys and investigations, personal artifact collections, memories, and records (1) before they are lost to memory, (2) acknowledging their contributions to the understanding of Maryland Archaeology, and (3) for compiling an early 21st century comprehensive data base for tomorrows syntheses on Maryland Archaeology. Compiling the early and current archaeological surveys and investigations, and documented artifact collections, personal memories and their written records is an important first step before their memories, their records, and their artifacts disappear altogether. A cross section of biographical sketches will illustrate what surprises I found out compiling these profiles.

Ives, Timothy (Rhode Island Historic Preservation and Heritage Commission)

Administrative Challenges of Rhode Island’s Hurricane Sandy Archaeological Surveys (B)

The surveys of archaeological sites damaged by Hurricane Sandy in Rhode Island were unprecedented, and involved several administrative challenges and limitations. These related to issues including incomplete property access, bureaucratic delays, and a Tribal collaboration that fell short. Because preserving most of these erosion-prone sites through shoreline stabilization is unlikely, management efforts will consider preemptive archaeological salvage excavations.

Jones, Brian (Office of State Archaeology, University of Connecticut)

A 17th Century Fortified Farmstead in Glastonbury, Connecticut (D)

The Lt. John Hollister Site in Glastonbury, Connecticut was occupied from at least 1650 to about 1715. Since that time it has rested quietly beneath an isolated pasture beside the Connecticut River. Remote sensing and archaeological investigations of the site document how effectively the Hollisters adapted to this new land and maintained their social and economic success, despite environmental, cultural and political challenges. The site is unique in Connecticut in providing such a rich picture of 17th century life. The pristine preservation of faunal,

botanical and other material remains within five large cellars provides a unique opportunity to document this important period of English adaptation to the colonial frontier and provides direct evidence of cooperation with the local Wangunk people. This talk summarizes the site's historical background and the results of the 2016 and 2017 excavations.

Jones, Brian (Office of State Archaeology, University of Connecticut)

Dr. Kevin McBride, Another Perfectly Adequate Prehistorian Lured to the Dark Side of Historical Archaeology (J)

No abstract available.

Kelly, John M. (The Public Archaeology Laboratory, Inc.)

The Edgerton Farmstead: Eighteenth-Century Occupation at the SB 11 Site in Franklin, Connecticut (D)

The Public Archaeology Laboratory, Inc. (PAL) recently completed excavations at Susquetonscut Brook Site 11 (SB 11), a multicomponent site in Franklin, Connecticut. The archaeological investigations identified a substantial eighteenth-century component, and archival research indicated that SB 11 was the home of Elisha Edgerton and his family from 1744 to the first decade of the nineteenth century. The Edgerton farmstead, historically located in the West Farms section of Norwich, underscores how properties evolved over the eighteenth century and provides more data on the lives of Connecticut's colonial yeoman farmers. SB 11 and other eighteenth-century Connecticut farmsteads also illuminate how sites dating to this time period can be difficult to identify, especially in the context of cultural resource management studies.

Kierwiak, Joe (Central Connecticut State University)

Connecting Connecticut Boy Scouts to Camp History through Archaeology (F)

Archaeological cultural sites are a part of our everyday existence. Often youth consider that one has to travel to different countries to engage in archaeology. However, this archaeologically informed-curriculum teaches Boy Scouts (ages 11-16) to recognize the value the familiar environment as more than "a pile of rocks in the woods." Teaching Boy Scouts how to excavate a seventeenth century mill site in a New England town, helps young citizens to appreciate the history of their built surroundings in what is seemingly natural landscape. Some excavation finds include pre-industrial nails, glass, 20th century drain pipe fragments and a horseshoe.

Knight, Dean (Wilfred Laurier University)

Huron Village Life at the Time of Champlain (H)

By the time Champlain entered into what is now Ontario, Canada there was a small body of literature concerning the people whom the Europeans (mainly French) met in Eastern Canada. This body of literature was later filled out and expanded upon by Champlain and the Jesuits, among others, through the mid-17th century. This literature gives the modern archaeologist information which helps to explain and, in some cases, put some meat on the dry post moulds from the archaeological site excavations. It also raises questions as to the accuracy of the ethnographic descriptions as they do not always agree

with the archaeological evidence. This paper looks briefly at the ethnographic literature and compares it to a number of excavations from Ontario in order to try to understand the Huron society at the time of Champlain.

LeBoeuf, Andrew (University of Connecticut)

The Paleo-Indians of Farmington and Connecticut (F)

This research focuses on the earliest known human inhabitants of the Americas, the state of Connecticut, and the town of Farmington, the Paleo-Indians. It is comprised of text sources, archaeological fieldwork, and expert interviews and contributions. What do the archaeological sites, research, and experts of Farmington and Connecticut tell us about the Paleo-Indian period? How can information from archaeological sites, research, and experts on the Paleo-Indian period be presented to a public audience such that it is both available and understandable? These are the two main questions that guided this work and are answered in the presentation. As the questions demonstrate, the presentation is divided between content and how that content can be made clear and accessible to the public. The research makes connections between then and today and stresses the importance of archaeology in the public eye.

Lepionka, Mary Ellen (Massachusetts Archaeological Society)

Ye Names of Ye Rivers: The Case for Wanaskiwam (G)

This slide lecture presents evidence suggesting the existence of a Late Woodland Algonquian agricultural village and ceremonial landscape in Gloucester, Massachusetts, and its persistence into the Contact Period. Wanaskiwam (“End of the marsh”) was the last in a chain of attested Massachusetts coastal villages along the Gulf of Maine. The presentation summarizes a five-year on-going interdisciplinary investigation that has combined archaeological, environmental, ethnological, linguistic, and documentary evidence. This evidence has contributed to reconstructing the history and subsequent “erasure” of a place and its people. The data also support the hypothesis that while maintaining a mixed economy coastal Algonquians also had permanent settlements with mobile farming prior to European contact.

Leslie, David E. (PAST, Inc./AHS, Inc.), Ouimet, William (Department of Geography, University of Connecticut), and Sportman, Sarah P. (PAST, Inc./AHS, Inc.)

Landscape Environmental Reconstructions Based on Underwater, Terrestrial, and Intertidal Core Extractions in Norwalk and Westport, CT (D)

Underwater, terrestrial, and intertidal core extractions in Norwalk, CT, as a component of Phase I survey for the CTDOT Walk Bridge Replacement Project, provided a wealth of information on the Holocene environmental and geologic record of Norwalk. The urbanized Area of Potential Effect (APE) has been heavily industrialized since the mid-19th century. The pervasive ground disturbance, landmaking, and hazardous soil contamination that characterize the APE presented obstacles to typical survey methods such as hand-excavated shovel test pits. These cores, recovered through vibracore and geoprobe extractions, were useful in reconstructing the

landscape of this region over the last 6,000 years. These landscape reconstructions, paired with documentary research, were also useful in assessing the archaeological potential of this area. Results show that the geomorphic and environmental landscape has changed dramatically in the last 6,000 years, although enduring features of this area were attractive for pre-colonial and historic-period activity throughout the Holocene.

Lynch, Kerry [University of Massachusetts]

Preliminary Report on the Proposed Griffin Brook Archaeological District in Central Connecticut (E)

Evidence of Native American occupation in North Bloomfield and East Granby Connecticut, beginning in the Middle Archaic and extending through the Woodland culture periods, was discovered during CRM surveys prior to electrical utility upgrades. A number of sites and site loci were identified on either side of the Farmington River and along Griffin Brook, a small watercourse draining north into the Farmington from a large wetland adjacent to the Talcott Mountain range. An area extending from portions of Griffin Brook in North Bloomfield to the north side of the Farmington River in East Granby containing Native American cultural material is proposed as the Griffin Brook Archaeological District eligible for listing on the National Register of Historic Places. This presentation is a preliminary report on some emerging patterns discerned during artifact analysis of Phase I, II, and III surveys.

McBride, Kevin (University of Connecticut)

New Perspectives on the Native Ethnohistory and Archaeology of Block Island (B)

In the wake of Hurricane Sandy funding was provided by the National Park Service to conduct archaeological surveys of 40 miles of Block Island's inner and outer coastlines. More than 160 new archaeological sites were identified most dating to the Woodland period. Intensive testing and excavations on 35 sites has provided significant new information on Maniscean settlement patterns along the coast. Several new site types were identified that indicate a far more complex settlement-subsistence system than previously thought.

McBride, Kevin (University of Connecticut)

New perspectives on the Archaeology of Seventeenth Century Battlefields and Domestic Sites (banquet keynote)

In recent years there has been a renaissance in archaeological and ethnohistoric studies regarding the nature of culture change and continuity among indigenous people in the early years of colonialism. Previous models of acculturation, assimilation, colonialism, and culture contact do not adequately address long-term processes of power relations, conflict and the often nuanced relationships between Colonists and Native Americans in the region. This paper will present a number of case studies in the archaeology of battlefields and domestic sites in southern New England that illustrate the innovative methods, approaches and research being conducted that elucidate the complexities of indigenous and colonial interactions in the Seventeenth Century.

McBride, Kevin (Mashantucket Pequot Museum and Research Center), and Naumec, David (Mashantucket Pequot Museum and Research Center)

Developing New Models and Methods for Identifying Native American Historic Sites in Southern New England (D)

This paper discusses remote sensing methods and techniques developed by Mashantucket Pequot Museum & Research Center (MPMRC) archaeologists to locate and investigate seventeenth and eighteenth-century Native American sites in southern New England. Historic period Native American sites include a wide range of metallic objects among the overall archaeological assemblage. The resulting metallic signature includes cuprous scraps, iron fragments, and lead objects that are associated with a wide range of domestic and military activities. Since 2007 MPRMC staff has incorporated the judicious use of remote sensing technology, most notably metal detecting, to identify potential historic period Native American sites ranging from small settlements to complex battlefields. Incorporating remote sensing technology into traditional archaeological survey can be an effective tool to rapidly identify concentrations of historic artifacts, discover light artifact signatures associated with small Native sites, test the accuracy of Phase I or II excavations, and ultimately save time and funding.

McKenna, David (Massachusetts Archaeological Society)

Fifty Years of Collecting from a Late Archaic Site in Danvers, Massachusetts (G)

This paper will cover 30 or more years of surface collecting in a cultivated field, and ongoing process of recovery of artifacts from the plowed layer, while studying the B horizon for potential features, before the land is developed for private cemetery use.

Nass, John P., Jr. (California University of Pennsylvania)

Changes in Burial Practices during the Late Prehistoric Period, c. AD 1050 – 1635, of Southwestern Pennsylvania (I)

Beginning with the oldest known burials dating to the Middle Paleolithic of the Old World, burial practices by human cultures have taken many forms over the millennia. This is also true for prehistoric Native Americans. In southwestern Pennsylvania during the Late Prehistoric Period, the preferred form of internment, whether child or adult, is that of a single individual buried within or immediately outside of a dwelling. This pattern has been documented across the territory occupied by the Monongahela Tradition and persisted for several centuries. Then beginning about c. AD 1400, a new form of burial has been documented at several village sites. Rather than family members being buried within or around the periphery of a dwelling, this new burial form centers on interment within a special structure known as a charnel house. The intent of this paper is to explore this change in burial practices and offer any explanation for what this departure might signal in terms of social and political organization.

Ouimet, William (Department of Geography, University of Connecticut)

Mapping stone walls and relict land use features with LIDAR data (D)

High-resolution, publicly available airborne LiDAR data for southern New England has transformed the ability to identify and map fine scale topographic features related to past human activity, particularly those which lie abandoned and covered by modern forests.

The most well-known and widespread example of these features seen in LiDAR data are stone walls, which indicate areas used for 17th-early 20th century agriculture and pasture. Another widespread feature type that can be detected by LiDAR is relict charcoal hearths, which were used in charcoal production. LiDAR is available for the entire extents of CT, RI, MA and parts of NY, VT, and NH, but to date historic features have only been mapped in isolated portions. Datasets of historic features

created through LiDAR analysis aid preservation and conservation efforts by enabling scientists, archaeologists, and concerned groups to locate, research, catalogue and demarcate the features, as well as their material sources and impact.

Phillips, John (Lower Hudson Louis A. Brennan Chapter of the New York State Archaeological Association), and Kostiw, Scott (Lower Hudson Louis A. Brennan Chapter of the New York State Archaeological Association)

A Ground Slate Point Found on the Hudson River Estuary (E)

In October 2016 a notched-base, ground slate biface was found by one of the authors on the east shore of the Hudson River, 25 miles north of Manhattan. Subsequent inquiries about this anomalous find led to a re-examination of slate as a tool stone, the manufacture and physical properties of slate bifaces, the distribution of slate projectile points and blades in Northeastern North America, and past theories about the technology's origin.

Rankin, Jennifer, Perry, Gabrielle (Temple University), Stewart, Michael, Carr, Michael, Curran, Zachary, Kopeznki, Karen, Burnevich, Ilya, Sparaciao, Christopher, Chong, Seok Choi, Hansell, Patricia, Ranere, Anthony (all Temple University), Wiest, Logan (Baylor University)

Late Pleistocene/Early Holocene Landscape Analysis at the Snyder Paleoindian Complex (K)

Geophysical imaging is increasingly being used to execute archaeological investigations at prehistoric Native American sites. We present a comprehensive 800 MHz ground-penetrating radar (GPR) survey of the Late Pleistocene/Early Holocene-aged Site-28WA550 (Snyder Complex, New Jersey), pre- and post-archaeological investigation. The surveys were used to establish site formation context and to assess the viability of GPR imaging in settings with minor lithological contrast and localized buried targets. A topographic high between two post-glacial paleo-channels formed the basis for identifying a landform suitable for human habitation, and revealed an upstream extension of a 2.5-m-deep paleo-depression. Further investigations identified transient stability surfaces also supported by magnetic susceptibility and grain-size to provide quantitative datasets and cultural data associated with the Paleoindian period. Although conditions apply, our study demonstrates the value of georadar surveys at archaeological sites lacking extensive ephemeral or permanent structures or earthworks, which may otherwise discourage the applications of geophysical imaging.

Ranslow, Mandy (Friends of the Office of State Archaeologist), and Pilver, Jeremy (Friends of the Office of State Archaeologist)

Archaeological Potentialities: The Future of Public Archaeology and Stewardship (F)

In their "Principles of Archaeological Ethics" adopted in 1996, the Society for American Archaeology codified as their primary responsibility the need to work for the conservation and preservation of the archaeological record by "practicing and promoting stewardship." They defined these stewards as "both caretakers of and advocates for the archaeological record, for the benefit of all people,"

emphasizing that their knowledge should be used “to promote public understanding and support for its long-term preservation.” This perspective on ethics is not unique, as more than twenty years earlier the American Anthropological Association prioritized our relationship to the subjects of study, as well as our responsibilities to the public, above anthropologists’ responsibilities to the discipline. Nonetheless, in areas of academia and the professional archaeological community, public outreach is often at best considered an afterthought, and at worst viewed with outright disdain. Not only is this an ethically dubious practice, it represents a significant missed opportunity. Engaging the public in our work has the potential to address some of the most pressing challenges in our field, including the protection and conservation of archaeological sites, fulfillment of our ethical responsibilities regarding stewardship, and securing of the long-term financial support necessary for meeting our goals as researchers.

Ranslow, Mandy (Friends of the Office of State Archaeologist), and Pilver, Jeremy (Friends of the Office of State Archaeologist)

Avocational Archaeology in Connecticut: Past and Present (F)

The roots of early archaeological work in Connecticut can loosely be tied to what we now call avocational archaeology. The Archaeological Society of Connecticut, its chapters, and others were historically active in excavations throughout the state. More recently, groups like the Friends of the Office of State Archaeology and the Litchfield Hills Archaeology Club provide excavation opportunities to the public under the supervision of professional archaeologists. This paper will highlight the history of avocational archaeology in the state and the contributions that have been made to our broader knowledge of the past.

Scholl, Nathan C. (Gray & Pape, Inc.)

Geoarchaeological Investigation within the Connecticut River Valley below Turners Falls (E)

The Turners Falls Gorge region of the Connecticut River Valley contains extensive late Pleistocene and Holocene deposits as well as an abundance of Pre-Contact archaeological sites spanning the last 12,000 years before present. This paper presents a new study of the geomorphological formation of the post-glacial alluvial landform in the Turners Falls Gorge region of the Connecticut River Valley using soil and geomorphologic information combined with dating based on radiocarbon samples and temporally diagnostic, cultural artifacts. Previous geoarchaeological studies have focused on landform development in relation to the location of archaeological sites just above the falls, this study focuses on landform and sites below the falls. A synthesis of the modern study with past studies is presented to provide a model of landscape development which can be used to help predict the location and age of archaeological sites both on and buried below the landscape in the gorge region.

Sgarlata, Cosimo Anthony (Western Connecticut State University)

Contribution from the West River Valley in Woodbridge, Connecticut to Current Models of New England Prehistory (A)

This paper discusses archaeological survey along the inland portion of a small river valley in Woodbridge, Connecticut. The study area includes three major physiographic zones: 1) fertile and flat lowland in Connecticut's Central Valley, 2) trap rock ridges, 3) the easternmost escarpment of the State's Western Highlands. Upland research provided evidence of ambush hunting, valley surveillance, and quarrying of local chalcedony. Information from lowland valley sites presents evidence of cultural continuity from Early Archaic through Late Archaic times. Also, a model for Late Archaic lithic technology is proposed emphasizing increased leisure time, fluidity and frequent visiting among neighboring bands. It is proposed that this represented a stable cultural adaptation that continued until more focalized horticultural subsistence appears during the Late Woodland.

Singer, Zachary L. (Institute for American Indian Studies & Lost Towns Project)

The Paleoindian Period in Connecticut: Forty Years after the Discovery of Templeton (A)

2017 marks the 40th anniversary of Roger Moeller's initial excavation of Templeton, the first Paleoindian site systematically studied in Connecticut. This paper provides updated interpretations regarding the Paleoindian sites in Connecticut that have been discovered over the last forty years. Paleoindian lifeways in southern New England will be considered based on my recent reanalysis of Connecticut sites.

Sportman, Sarah (PAST, Inc./AHS, Inc.), and Singer, Zachary L. (Institute for American Indian Studies & Lost Towns Project)

Introduction: Connecticut Archaeology in the 21st Century (A)

It has been more than 25 years since the annual meeting of the Eastern States Archaeological Federation was held in Connecticut. Since that time, significant archaeological research has been conducted throughout the state, spanning the entire period of human settlement, from the Paleoindian through the historic period. The development of new technologies and archaeological methods and theories have resulted in new interpretations of the cultural history of Connecticut. Presenters in this session will highlight recent archaeological research from across the state, including newly identified sites, large-scale surveys, reinterpretations of classic sites, technological advances, and new research directions in Connecticut archaeology.

Sportman Sarah P. (PAST, Inc./AHS, Inc.), and Harper, Ross K. (PAST, Inc./AHS, Inc.)

Settling Connecticut: A 17th Century Component in Old Wethersfield (D)

This paper presents the preliminary analysis of a 17th-century component in Wethersfield, Connecticut. Recent archaeological work at the Webb-Deane-Stevens Museum complex, a National Historic Landmark, resulted in the discovery of an intact portion of the 17th-century landscape. The associated deposits contain a rich, well-preserved assemblage consisting of domestic artifacts, personal items, architectural materials, and food remains, as well as several post molds and a section of a palisade wall. Established in 1634, Wethersfield is considered Connecticut's first town. The first

European occupant of the property arrived in the 1630s, during the initial period of English settlement. The recovered artifacts and features appear to date to the First Period, and represent some of the earliest archaeological evidence of European settlement in Connecticut.

Vavrsek, Jessica (State University of New York at Albany)

A Brief Look at St. Lawrence Iroquoian Pottery Motifs (K)

Pottery motifs are known to change across time, space and group affiliation, and are something that can be seen archaeologically. In an attempt to better understand the St. Lawrence Iroquoians living in and around Jefferson County, New York, I have begun to look at rim sherds recovered from archaeological sites in the area. Each of these sherds contains some form of decorative motif that can potentially tell a story about when and where it came from. It is my hopes that I will be able to use these sherds to determine if individual motif components are indicative of location or time.

Wallace, Rob (Archaeological Society of Connecticut)

Ales Well that Ends Well: Archeological Research at the Sun Tavern, Fairfield CT (F)

The building known locally as the Sun Tavern was constructed during the 18th century, and is located in the original “Four Squares” settlement of the town of Fairfield. In the second half of the century, owner Samuel Penfield operated it as a tavern. During the Revolutionary War it was burned by the British and afterward rebuilt on the same site. Local tradition states that President George Washington stayed there during his tour of the New England states in 1789. After Sam Penfield’s death in 1811, the building ceased to be a tavern, and it became a private residence during the 19th and 20th centuries. Acquired by the Town of Fairfield in 1978, and currently managed by the Fairfield Museum and History Center, the structure has undergone several restoration projects. This presentation will review the recent excavation and artifacts recovered, as well as discuss the restoration and interpretation of the building and its past.

Waller, Jr., Joseph (Jay) N. (The Public Archaeology Laboratory, Inc.)

Wind and Waves: Coastal Storms and the Loss of Rhode Island’s Ancient Past (B)

Hurricane Sandy impacted Rhode Island’s south coast in October 2012. Storm surge and wind-driven waves eroded considerable sections of the shore damaging historical and archaeological sites located at the contact between the land and sea. Emergency response and preservation planning archaeological surveys conducted in response to Hurricane Sandy represent the first large scale, systematic attempts to identify and evaluate vulnerable archaeological sites situated along the Rhode Island coast. These surveys also underscored the long-term threats that rising seas and future tropical storms pose to ancient, as well as, more recent cultural deposits. Continued erosion of the Rhode Island shore imposes current and future financial and logistical challenges to preservationists wishing to preserve the Ocean States’ unique maritime history.

Watson, Jessica E. (State University of New York at Albany)

An Updated Chronology of Martha's Vineyard: AMS Dates from the Hornblower II and Frisby Butler Sites (E)

The Frisby Butler and Hornblower II sites, located along the northern shore of Squibnocket Pond on Martha's Vineyard, contain temporally distinct, non-overlapping occupations from the past 5,000 years. The sites offer the opportunity to examine the changing lifeways of people during the later Holocene, a period of much cultural and environmental change. This presentation will review previous chronologies presented by early archaeologists on the island (Byers and Johnson, Guersney, Huntington) and more recent researchers (including Chilton, Doucette, Richardson, and Ritchie) and explore a suite of new AMS dates from the southwestern corner of the island. In particular, the paper will focus on potential explanations for the abandonment and eventual re-occupation of Hornblower II.

Wegner, Paul (Institute for American Indian Studies)

The Hicock-Benson-Palmer Site: A Case Study in Salvage Archaeology (D)

In 1973 Warren Hensel, a member of the Shepaug Valley Archaeology Society (SVAS), visited the Hicock family farm in South Britain, CT. At the time of Hensel's visit to the site, the Benson-Palmer Real Estate firm had begun bulldozing the property to develop condominiums. The high volume of artifacts found in the disturbed area, however, prompted Hensel to contact Ned Swigart, the President of SVAS, who was able to delay development so SVAS could investigate the site. Under the direction of Swigart, SVAS excavated portions of the property from 1973-1974. The result of this excavation was the discovery of a large Late Woodland occupation. Over 3,300 artifacts were recovered from the site including lithics, ceramics, faunal and floral remains. While only one post mold was uncovered, the quantity and distribution of artifacts within the site suggested a semi-permanent settlement. This presentation will discuss the cultural remains uncovered by SVAS and how a fresh analysis of the data can enhance our interpretation of this early site excavation.

Wiegand, Ernest A. (Norwalk Community College and Archaeological Society of Connecticut)

Norwalk Community College's "Archaeology as an Avocation" Certificate Program: Training the Citizen Archaeologist Since 1975 (F)

Beginning in 1975, the "Archaeology as an Avocation" certificate program at Norwalk Community College has trained the citizen archaeologist in the study of local historic and prehistoric archaeology. Program students have discovered over 200 prehistoric archaeological sites in Fairfield County and surrounding areas and have been active in the study, reporting and preservation of local prehistoric and historic sites. This presentation will trace the origins and development of the program and the accomplishments of its students.

Wiegand, Ernest A. (Norwalk Community College)

The Brush Island Site: A Single-Component Orient Phase Site in Coastal Connecticut (A)

Orient phase sites are not numerous in southwestern Connecticut. Most are known from surface collections and those few that have been excavated under controlled conditions have been at multicomponent sites where the mixture of deposits have limited their analyses and interpretation. The discovery of the Brush Island site in coastal Greenwich is the first undisturbed single component Orient site from southwestern Connecticut. The results of this compliance-driven investigation will be presented along with a comparison with other local Orient phase sites.

Willison, Megan (PhD Student, University of Connecticut)

Households, Metals, and Seventeenth Century Settlement Patterns: A Preliminary Analysis of Indigenous Domestic Sites in Southern Connecticut (J)

Kevin McBride, in his doctoral dissertation, identified two major shifts in settlement patterns in the lower Connecticut River Valley. Since that time, McBride has published various reports and articles on archaeological site variability and the changing social and economic organizations of households in southern New England. Although still interested in settlement patterns, Kevin McBride is a man of many research interests and has more recently done extensive work documenting the battlefields of the Pequot War (1636-1637) and King Philip's War (1675-1676). Throughout the course of his work documenting the Battle of the English Withdrawal, a retreat which followed the Mystic Massacre on May 26, 1637, McBride discovered the possible locations of multiple seventeenth century indigenous domestic sites. This paper will discuss the methodology and diagnostic artifacts which led to these conclusions in addition to a preliminary analysis and discussion of the sites in question and their material assemblages.

**Wilson, David (AHS, Inc./ Mashantucket Pequot Museum and Research Center), and
McBride, Kevin (Mashantucket Pequot Museum and Research Center)**

Analysis of Sturgeon Fishing Encampments from Block Island, Rhode Island (D)

Several archaeological deposits along the shores of Block Island, RI were exposed by the destructive wave action of Hurricane Sandy in 2012. Once exposed, these deposits were threatened by continual coastal erosion and excavated by the Mashantucket Pequot Museum and Research Center as part of the 2013 Hurricane Sandy Disaster Relief Grant (P13AF00176); several of the excavated sites contained significant faunal assemblages. Analyses included relative abundance and Number of Identifiable Specimens (NISP), as well as comparisons with previously excavated inland sites. Based on these analyses, two of the coastal sites identified were likely used primarily as sturgeon fishing camps during the Woodland and Contact periods. Ethnographic reports and historical accounts support these conclusions, yet alternate explanations for the sites' context are also explored and discussed.

Zimmerman, Michael (Bridgewater State University)

The Cultural Heritage Crisis in the Middle East: Recent Events and Issues (I)

We have all seen, and noted with increasing alarm, the wanton destruction of archaeological sites and cultural heritage by the terrorist group, ISIL, and other political actors in the Middle East, particularly those involved in the conflict in Syria. These actions are not limited to destruction at archaeological sites such as Apamea, Nimrud, Khorsabad, Nineveh, Dura-Europos, Ebla, and Palmyra, but also include widespread looting of portable cultural heritage, sold to collectors in the West to help fund their activities. This paper analyzes how ISIL and other groups in the region are looting, destroying, and damaging cultural heritage, and, in particular, will show how archaeologists are using visual media, including 3D scans, photogrammetry, and open-source cultural heritage inventories to fight the destruction of cultural heritage in the region, and how they are endeavoring use these tools to change public perceptions of cultural heritage protection.

More Tools for Bone Analysis

C:N, %C, %N, $\delta^{15}\text{N}$, $\delta^{13}\text{C}$ (IRMS)

- All included with ^{14}C dating on bone collagen
- No cancellation fees
- Experts in dating bones

Radiocarbon Dating
Consistent Accuracy, Delivered on Time

